



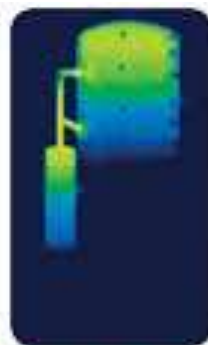
**Payback  
Period < 3  
years**



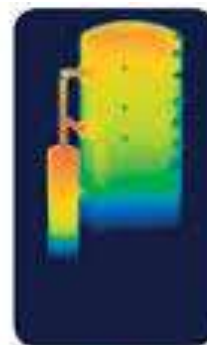
**Steps in Pressurized System:**



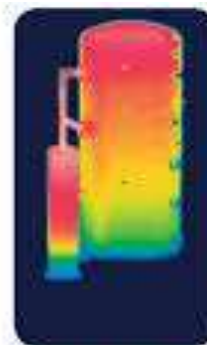
**30 Minutes**  
After 30 minutes of Solar gain the upper portion of tank begins to heat.



**1 Hour 15 Minutes**  
After 1 hour and 15 minutes mark you can begin to see the tank middle portion begin to heat.



**2 Hours 5 Minutes**  
After 2 hour and 5 minutes mark of solar gain the entire tank is uniformly heated.



**2 Hours 50 Minutes**  
After 2 hours and 50 minutes of solar gain the tank is uniformly heated.

**Pressurized Inner Tank**



## Products Range:

## Technical Specifications

| Capacity (LPD)                          | 125         | 250         | 375         | 500         |
|---|-------------|-------------|-------------|-------------|
| Type                                    | FPC         |             |             |             |
| Working                                 | Pressurized |             |             |             |
| Inner tank thickness (mm)               | 3           | 3           | 3           | 3           |
| Inner Tank Material                     | SS 304      | SS 304      | SS 304      | SS 304      |
| Outer Tank Material                     | GI          | GI          | GI          | GI          |
| Insulating Material                     | PUF         | PUF         | PUF         | PUF         |
| Insulating Thickness (mm)               | 50          | 50          | 50          | 50          |
| Insulating Density (kg/m <sup>3</sup> ) | 38          | 38          | 38          | 38          |
| Collector size (mm)                     | 1000 x 2000 | 1000 x 2000 | 1000 x 2000 | 1000 x 2000 |
| Collector material                      | Copper      | Copper      | Copper      | Copper      |
| Hot Water Temperature (°C)              | 55 - 60     | 55 - 60     | 55 - 60     | 55 - 60     |
| Working Pressure (kg/cm <sup>2</sup> )  | 5           | 5           | 5           | 5           |
| Collector Qty.                          | 1           | 2           | 3           | 4           |
| Absorber Area (sqm.)                    | 2           | 4           | 6           | 8           |
| System Weight                           | 113         | 192         | 292         | 354         |
| Space Required (sqft.)                  | 4 x 8       | 9 x 8       | 14 x 8      | 18 x 10     |
| Warranty (years)*                       | 5           | 5           | 5           | 5           |

## Compliance of Indian Standards in Practice

- IS 12933 (Part 1):2003, Solar flat plate collector -Specification, Part 1- Requirements.
- IS 12933 (Part 2):2003, Solar flat plate collector -Specification, Part 2 - Components.
- IS 12933 (Part 3):2003, Solar flat plate collector -Specification, Part 3 - Measuring instruments.
- IS 12933 (Part 5):2003, Solar flat plate collector -Specification, Part 5 - Test methods.

Waasol Energies LLP is the largest vertically Integrated Company engaged in Solar Business in India with diversified business interest with in over 65+ nations across the globe. It is fact that 44 % energy is consumed in Thermal Applications Globally and if we replace 10 % of the thermal energy with Solar Thermal, there will be enormous savings in High Recurring Energy Bills & Consumption of Fossil Fuels while great savings on Carbon Foot Prints as well. We strongly believe that the Customized application development is essential for the promotion of Solar Thermal and hence we have always emphasized on development in house Research Team. Solar thermal has been key Business Vertical which helps to save recurring energy expense with attractive IRR. Waasol Energies LLP possess Passionate team of Techno commercial professions who provides Solutions for Hot Water, Process Heat and Its applications.

## Contact:

**WAASOL Energies LLP**

40, Vibrant Business Park, Opp. UPL,  
GIDC, vapi – 396191, Gujarat, India

Ph.: + 951021474/71

Email: [crm@waasol.com](mailto:crm@waasol.com)

\* Terms and Conditions as per warranty cards